

**AMH**  
AUTOMOTIVE GROUP

# 2019 RALLY OF THE BAY BATEMANS BAY - NSW



Saturday 29 June 2019

## DO'S AND DONT'S OF SPECTATING

- Cars under competition conditions can lose control and leave the defined road at any time. Do not stand in any areas which are not authorised or which are contrary to the advice of the organisers and officials/marshals.
- Be prepared. Weather wise, bring hats, ground cover, sun screen and protection in case of rain or cold weather. Food and drink outlets are not provided so ensure you have some of your own food and drinks available.
- Park your car sensibly so that it will not obstruct emergency vehicles, competitors, service crews or other spectators. In all cases obey parking instructions given by supervising officials. It is usually best to park your car facing the way out.
- Do not try to emulate rally drivers. Remember that if you give cause for complaint it will reflect badly on the rally and the sport as a whole. Drive carefully both to and from spectator viewing areas, and be ready to give way if necessary on narrow stretches of road.
- Please do not take dogs or young children to spectator points. If you have to, make sure they are completely under your control and please make sure that animals and children do not get in the way of competing cars or mechanics or officials when they are working.
- Do not light fires or smoke in the forests. Do not smoke near a car that is being serviced or refueled.
- At all times keep clear of controls, including from the timing marker to the control area. If control officials ask you to move, please help them by doing so - remember they have a job to do which can be difficult enough as it is. If you do want to see a control point in action, remember to stand well back from the control area.
- Take your entire litter home with you - it is handy to have a bag or carton in your boot. Cans and paper do not help beautify our forests.
- At service points do not crowd mechanics when they are working. They would not appreciate it. Neither will you if someone drops a wheel or a sump guard on your foot!

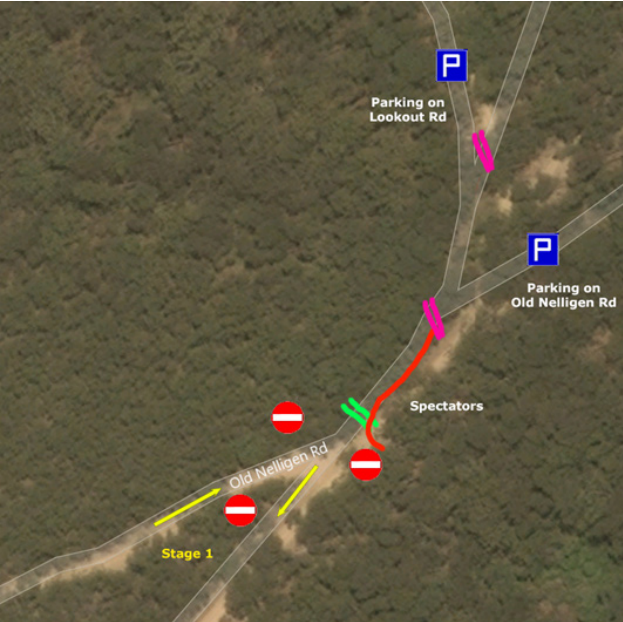




Spectator Point 1 – Old Nelligen / Lookout Rd

1st Car Due at **09:00am** - Stage 1 is only used once today so the whole field should be through here before midday.

Cars approach along Old Nelligen Rd from the left and turn hard right into Lookout Rd (bottom section of diagram) and head away up hill.



Ceremonial Start

Crews will assemble in Clyde Street along the waterfront in Batemans Bay from 7:30am onwards. A chance to see the cars and crews up close ask questions and grab some photos of nice clean cars before the action gets underway with cars heading off to the forest from 8:45am onwards.

A chance for everyone to support the local businesses as well - grab a bite to eat and a coffee from one of the cafes in the area - and a newspaper for “later” ...

Getting to the Spectator Points

All of the directions out to “forest” points “start” from the One Way section of Orient Street just along from the Ceremonial Start.

Of course you can join them from anywhere - for Points 1 & 2 you head North on the Princes Highway, Point 3 is West along the Kings Highway and out through Nelligen while Point 4 is off the Princes Highway headed South ....

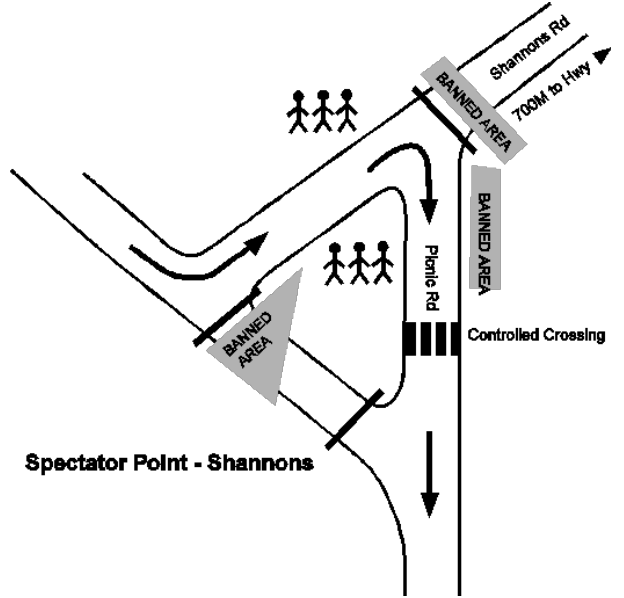
Motor Sport Activities are inherently dangerous recreational activities and there is significant risk of injury, disability or death.

If you choose to participate in these activities and you are killed or injured because the activities were not supplied with due care and skill or were not reasonably fit for their purpose, your rights to sue the Confederation of Australia Motor Sport Ltd (**CAMS**) and/ or the Entities\* are excluded, restricted or modified. For full details of the exclusion, restriction or modification of your rights please refer to <http://www.cams.com.au/get-involved/events/disclaimers>.  
\*A full list of CAMS associated entities can be viewed at <http://www.cams.com.au/get-involved/events/disclaimers>.  
A copy of the full disclaimer is also available at Rally HQ – Coachhouse Marina Resort

Spectator Point 2 – Shannons Rd / Ironbark

1st Car Due just after **09:00am** - Stage 1 is only used once today so the whole field should be through here before midday. Leaving you with some time to visit the Service Park before heading out to Stage 5 for more action

A couple of gutters through here make for some interesting action - and reactions ...



		DISTANCE: <b>13,71 Km</b>		DAY:	SECTION:
SPECIAL STAGE		RECORD:		TIME ALLOWED:	
Spectator Access 1 & 2		13,71 Km			
DISTANCE		DIRECTION		INFORMATION	
TOTAL	PARTIAL			DISTANCE REGRESS	
0,00	0,00	1		13,70	
0,27	0,27	2		13,43	
0,54	0,27	3		13,16	
1,82	1,28	4		11,88	
7,10	5,28	5		6,60	
11,21	4,11	6		2,49	
13,71	2,49	7		0,00	

Spectator Point 3 – Runnyford Rd / Bolaro Mtn

1st Car Due just before **1:00pm** - Stage 4 is only used once today so the whole field should be through here by about 4:00pm. This point is 14km into a 45km stage

Cars approach up through a series of climbing bends then turn hard left and head away into the next 31km of the stage

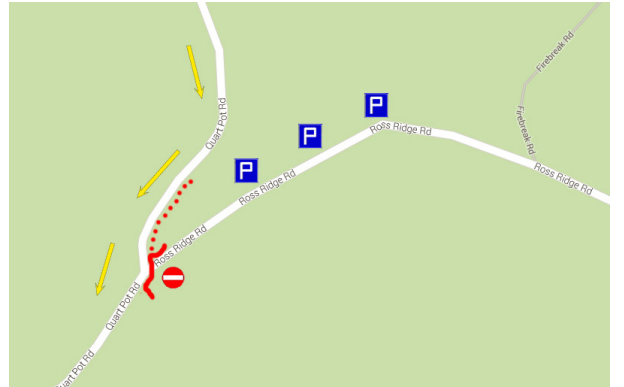


		DISTANCE: <b>14,63 Km</b>		DAY:	SECTION:
SPECIAL STAGE		RECORD:		TIME ALLOWED:	
Spectator Access 3		14,63 Km			
DISTANCE		DIRECTION		INFORMATION	
TOTAL	PARTIAL			DISTANCE REGRESS	
0,00	0,00	1		14,63	
0,27	0,27	2		14,36	
0,54	0,27	3		14,09	
1,82	1,28	4		12,81	
10,00	8,18	5		4,63	
10,45	0,45	6		4,18	
14,63	4,18	7		0,00	

Spectator Point 4 – Quart Pot / Ross Ridge

This point is 35km into our 45km stage so the 1st Car should get here by around **1:10pm** ...

The road here is starting to get wider & wider so the sweeping bends will let crews carry plenty of speed into this tricky crest ...



		DISTANCE: <b>15,00 Km</b>		DAY:	SECTION:
SPECIAL STAGE		RECORD:		TIME ALLOWED:	
Spectator Access 4		15,0 Km			
DISTANCE		DIRECTION		INFORMATION	
TOTAL	PARTIAL			DISTANCE REGRESS	
0,00	0,00	1		15,15	
0,27	0,27	2		14,88	
0,53	0,26	3		14,47	
7,87	7,34	4		7,13	
8,91	1,04	5		6,09	
15,00	6,09	6		0,00	

Watch the Results “Live”

The Special Stage times that determine the results of the event are being collected “live” from the Rallysafe system that tracks the progress of every competitor all day - and they can be viewed “as they happen” on the website [chrissport.co.nz](http://www.chrissport.co.nz) ... so you can keep an eye on the progress of your favourite team during the day.

Remote Refuel  
Steampacket Hotel, Nelligen

Crews may refuel at the Steampacket Hotel in Nelligen between Stage 1 & 2 from approximately 9:15am onwards.



Event Service Park  
Corrigans Beach Reserve - Batehaven

This location beside the bay makes a great backdrop to the activity involved in keeping cars, and crews, competing throughout the day.

There are 2 scheduled services - the first cars should be in around 11:30am and then again around 2pm (after the long 45km stage) so there should be activity here for a few hours as the full field comes and goes ...

The last cars should be heading out to the final 2 stages around 5:00pm - just as the front runners return to pack up after competing for 130km during the day - who will the winners be?

Awards Presentation / Event HQ  
Coachhouse Marina Resort

At the end of a long day crews and officials will gather in the Rally HQ area to share a meal, a drink or two, a few tall tales and celebrate as the various event awards are presented to the winning crews.

Why not come along and join us - meal tickets will be available at the door and a cash bar operates.