

MIDSTATE freight
your destination for freight
www.msf.net.au

2022

OBERON STAGES

CENTRAL WEST NSW
23 APRIL

motorsport australia




Photo by Jack Martin

SUPPLEMENTARY REGULATIONS

April 23

Round 2 MTA NSW Rally Championship
Round 2 NSW Clubman and Hyundai Series
Round 3 East Coast Classic Rally Series - 2WD & 4WD

Proudly Supported By:

























PROUD SPONSORS OF THE 2022 OBERON STAGES RALLY

MIDSTATE FREIGHT is recognised for its commitment to quality, service and safety and its continued innovation in the development of its process and systems to support our customers.

Similarly, **MIDSTATE FREIGHT** is recognised as a dynamic industry leader in the transport sector and is known for striving for quality, solution focused approaches and importantly delivery on time and in full. Midstate Freight started in 2006 when an opportunity arose to purchase a small delivery service operation out of Bathurst delivering into Mudgee three days a week. The business quickly grew and within twelve months we were running five days and two extra trucks, one contracted to Australia Post. Five years later we have six depots, over 80 staff and upwards of 65 vehicles in our fleet.

The **MIDSTATE FREIGHT** group solutions can be summarised as follows:

- Reliable and professional organisation with second to none experience in transport and warehousing.
- Business infrastructure that can support the full end to end supply chain requirements for all business partners.
- We believe that our attitude the customer is number one is the key to our success

Our Story

For more than a decade, Midstate Freight have continued to build a strong and reliable network of express freight services delivering daily throughout the Central Western area of NSW Australia through our own facilities in Bathurst, Orange, Dubbo, Mudgee, Lithgow and Cowra employing more than 80 local staff with more than delivery vehicles.

We partner with leading freight transport and logistics companies to ensure fast and efficient local, national and international express freight services for local businesses and residents.

Our Staff

The Midstate Freight team is passionate about our business and dedicated to providing value for our customers.

Each depot is staffed with a Manager for the effective running of the day to day operations and to take charge of staff and operations.

We believe our attitude that the customer is number one is the key to our success.

CONTACT US

1300 643 782

1300 MIDSTATE

Email admin@msf.net.au



Message to Competitors

Welcome!

The North Shore Sporting Car Club is excited to present the 2022 **Midstate Freight Oberon Stages Rally**. The rally will be a round of the following series:

- NSW Rally Championship
- East Coast Classic Rally – 2WD Series
- East Coast Classic Rally – 4WD Series
- NSW Clubman Rally Series;
- Hyundai Rally Series.

Numerous thanks to long standing and highly accomplished rally competitor Ray Winwood-Smith and his brother Mick from Midstate Freight – based in Bathurst just up the road from rally HQ in Oberon - who have again come on board as our naming rights partners for the third year. If you need freight moved anywhere in Western NSW then you should be talking to Ray and Mick and the team at Midstate Freight. Most importantly thanks to you the competitors for your patience amidst all the Covid 19 restrictions.

This year's event has a new name to reflect the changed nature of the event. When NSSCC started running this event many years ago it was very oriented toward Jenolan but over the past few years the rally has been based in the great town of Oberon, which has welcomed the rally and opened its arms to the rally fraternity, so we felt it was logical to rename the rally to reflect its base in Oberon and the forests around the town.

The great Oberon Rugby Leagues Football Club will again host the start, finish and service park. The Covid 19 crisis has made all sports difficult to run and manage and under our Covid 19 safety plans the Leagues Club compound allows us a secure area that can be closed off from the general public, if necessary, which may or may not be a factor when we get to 23rd April. I am sure you will understand these are extraordinary times that mean we have to make some sacrifices to allow our sport to go ahead.

Depending on the restrictions we have to deal with on 23rd April, food may be available all day long courtesy of the Oberon Tigers, and hopefully a coffee van will be in attendance, everything hinges on the restrictions at the time.

Many thanks to all our team at NSSCC for putting in so much work to ensure the Midstate Freight Oberon Stages runs successfully and well again in 2022. This is my third year as a Clerk of the Course at a State round and this has been possible because of the great team we have at NSSCC. Particular thanks to John McCredie and who has done so much work this year as our great road director, Ian Bray as our secretary , John Buckley as our communications manager and all of the team involved.

We have a very compact and challenging event that will be a lot of fun with great driving roads in the magnificent hills around the lovely town of Oberon.

Although the rally is a secret route event for all championship contenders, we are offering an optional pace note entry, with anyone contesting with notes precluded from scoring points. With so few rallies in 2021 we thought it was a good opportunity to give a wider rally audience a reason to come and enjoy our great stages at Oberon.

Finally, we would like to thank those people involved in staging the event. From the Forestry Corporation, Lithgow Police, Oberon Council, Oberon Rugby Leagues Football Club, to all the event's administration people, radio operators, medical crew, scorers, scrutineers, set-up crews, caterers, control and road closure officials, clean-up crews and so many others, and of course to our naming rights partner Midstate Freight and the various series partners. Thank you one and all!

Good luck to all Competitors and safe travelling to and from the Event!

Jon Thomson
Clerk of the Course



COVID-19 Statement

The concessions and restrictions placed by the NSW Government on movement and activities during the COVID19 Pandemic are extremely fluid in nature. There is a strong possibility the measures needed to be taken by individuals and organisations may be significantly different between the date these Supplementary Regulations are published and the date of the event. It is therefore necessary the Event Website and Event Facebook Page be monitored for Bulletins and variations to the Supplementary Regulations prior to the event.

Under no circumstances should anyone with symptoms consistent with COVID-19 attend the event. This includes any fever, respiratory symptoms, shortness of breath, sore throat, cough, fatigue, or sudden lack of sense of smell or taste.

Under no circumstances should anyone attend the event if they are:

- i. In the 7 day self-isolation period after testing positive to COVID-19; or
- ii. Still exhibit symptoms after a 7 day self-isolation period; or
- iii. In contact with a known COVID-19 positive case in the previous 14 days.

It is highly recommended that if any participant exhibits symptoms consistent with COVID-19 prior to the event then the individual should take a COVID-19 PCR test through NSW Health or a Rapid Antigen Test and self-isolate if positive.

Many administrative and operational processes for the event may be very different to what has been normally experienced in the past. This may result in some activities taking longer than expected. Please allow additional time and tolerance during this difficult period so we can all participate and be involved in the sport we love. Please do read these Supplementary Regulations closely and in the lead up monitor for any applicable changes that may be made to the event as they become available.

Social distancing and other COVID-19 practices must be always observed.

Contents

1	EVENT PROGRAMME	7
2	EVENT SPONSORS	8
3	ORGANISATION	9
3.1	Nature of Event	9
3.2	Authority	9
3.3	Insurance	9
3.4	Organising Permit	9
3.5	Promoter	9
3.6	Organising Committee	10
3.7	Official Address	10
3.8	Alteration to, Abandonment or Termination of the Event	10
3.9	Alcohol, Drugs and Other Substances	10
3.10	Judges of Fact	10
4	COMPETITION DETAILS	11
4.1	Entries	15
4.2	Approval to Share Contact Details with the NSW Rally Advisory Panel	15
4.3	Entry Fees	15
4.4	Number of Entries	15
4.5	Change of Entry	16
4.6	Crew Eligibility	16
4.7	Starting Order	16
4.8	Competitor Briefing	16
5	SCRUTINEERING & DOCUMENTATION	16
5.1	Scrutineering	16
5.2	Documentation	17
5.3	Timetable for Scrutineering and Documentation	17
6	VEHICLES	18
6.1	Vehicle Eligibility	18
6.2	Classes - NSWRC	18
6.3	Classes - ECCRS-2WD	18
6.4	Classes - ECCRS-4WD	18
6.5	Classes - Open	18
7	EVENT DETAILS	19
7.1	Rally Headquarters	19
7.2	Official Notice Board	19
7.3	Directions to Rally Headquarters and Service Park	19
7.4	Service Park In Controls and Final Time Control	19

7.5	Servicing and Refuelling	19
8	GENERAL INFORMATION	20
8.1	Maps	20
8.2	Odometer Check	20
8.3	Route Instructions	20
8.4	Pacenotes	20
8.5	Reconnaissance	20
8.6	Event Signage	21
8.7	Sunrise, Sunset at (Venue)	21
8.8	Penalties	21
8.9	Heats	21
8.10	Finishing Qualifications	21
8.11	Results	22
8.12	Rallysafe	23
9	REMINDERS	24
9.1	Retirements	24
9.2	Re-joining	24
10	WORKPLACE HEALTH & SAFETY ADVICE FOR ENTRANTS & SERVICE CREWS	25
11	AWARDS	26
11.1	Outright Awards	26
11.2	NSW Rally Championship	26
11.3	East Coast Classic Rally Series-2WD	26
11.4	East Coast Classic Rally Series-4WD	26
11.5	Clubman Rally Series Awards	26
11.6	Hyundai Rally Series Awards	26
11.7	Open	26
APPENDIX A - RALLY HEADQUARTERS LOCATION MAP		27
APPENDIX B - VEHICLE NUMBERING AND SIGNAGE REQUIREMENTS		28

1 EVENT PROGRAMME

Monday, 14 March 2022

0900hrs Entries open

Monday, 11 April 2022

0800hrs Regional scrutineering period starts

Saturday, 16 April 2022

0800hrs Reconnaissance starts ONLY for those competitors entered in the "Open" section

Tuesday, 19 April 2022

1800hrs Entries close

Wednesday, 20 April 2022

1800hrs Seeded list of entries published

Friday, 22 April 2022

1600hrs Rally Headquarters opens
Documentation verification commences

1600hrs (Pre-approved) Scrutineering at Venue commences

1800hrs Scrutineering at Venue concludes

2000hrs Documentation verification concludes
Rally Headquarters closes

Saturday, 23 April 2022

0700hrs Rally Headquarters re-opens

0715hrs Documentation verification recommences

0815hrs Documentation verification concludes
Official start order & start times posted

0830hrs Competitor briefing

0900hrs First car starts

1630hrs First car finishes (Approx.)

1930hrs Rally Headquarters closes

2 EVENT SPONSORS



NAMING RIGHTS PARTNER



RALLY NSW SERIES SPONSORS



3 ORGANISATION

3.1 Nature of Event

The **Midstate Freight Oberon Stages** is a meeting of the following two Events:

- **Midstate Freight Oberon Stages State:**
Round 2 of the **NSW Rally Championship** (NSWRC)
Round 3 of the **East Coast Classic Rally – 2WD Series** (ECCRS – 2WD)
Round 3 of the **East Coast Classic Rally – 4WD Series** (ECCRS – 4WD)
An “**Open**” category.
- **Midstate Freight Clubman Classic:**
Round 2 of the **Clubman Rally Series** (CRS) and,
Round 2 of the **Hyundai Rally Series** (HRS).

The Events will be conducted as special stage rallies over Public, Private and Forest Roads within the Oberon local government area on Saturday 23 April 2022.

The Events are competitive Events, designed to test the skill of the driver and co-driver, and the reliability and mechanical condition of the competing vehicle.

3.2 Authority

The event is to be held under the FIA International Sporting Code including Appendices, the National Competition Rules (NCR) of Motorsport Australia, the National Rally Standing Regulations (NRSR), the 2022 Rally NSW Competition Conditions, these Supplementary Regulations and any further regulations which may be issued by the organisers and approved by Motorsport Australia.

The event shall use A to A timing in accordance with the National Rally Standing Regulations.

This event will be conducted under and in accordance with Motorsport Australia OH&S, Safety 1st and Risk Management Policies found on the Motorsport Australia website at <https://motorsport.org.au/regulations/safety-integrity/policies> and COVID-19 “Return to Race” Guidelines found at <https://motorsport.org.au/covid-19>.

3.3 Insurance

Certain public, property, professional indemnity and personal accident insurance is provided by Motorsport Australia in relation to the event. Further details can be found at <https://sport.ajg.com.au/motorsport-australia> and in the Motorsport Australia Insurance Handbook, available at motorsport.org.au **Note: Under the terms of the Motorsport Australia Public Liability Insurance policy, competitors may be required to pay an excess of up to the first \$10,000 of any claim.**

3.4 Organising Permit

The Motorsport Australia Permit number is **222/2304/01**.

3.5 Promoter

The Rally will be promoted by the North Shore Sporting Car Club Ltd.

3.6 Organising Committee

The promoters have nominated the following Organising Committee -

• Clerk of the Course	Jon Thomson	M 0418 641 959
• Assistant Clerk of the Course/Road director	John McCredie	M 0413 042 763
• Assistant Clerk of the Course/Operations	Angus Fraser	M 0407 209 246
• Rally Secretary	Ian Bray	M 0419 518 610
• Competitor Relations Officer	Sarah Bell	M 0437 866 887
• COVID 19 Checker	TBA	
• Chief Scrutineer	Stewart Wilkins	
• Results Manager	Phil Morley	

The following officials have been appointed:

• Chief Steward	Ian Bigg
• Stewards	Allan Denney and Robert Wells
• Event Checker	Peter Harris

3.7 Official Address

All correspondence must be addressed to:

THE EVENT SECRETARY

Midstate Freight Oberon Stages Rally
via email to: **OberonStages@gmail.com**

No responsibility will be accepted by the organisers for any correspondence sent to any other address.

3.8 Alteration to, Abandonment or Termination of the Event

In accordance with the National Rally Standing Regulations and the Motorsport Australia NCR's, the Organisers reserve the right to abandon, alter or terminate the event at any point

3.9 Alcohol, Drugs and Other Substances

The holder of a Motorsport Australia Licence (or a Licence issued by another ASN) may be tested for the presence of any drug or other banned substance and subject to a penalty for a breach of the Australian National Anti-Doping Policy and/or the Motorsport Australia Illicit Drugs in Sport (Safety Testing) Policy at www.motorsport.org.au.

Consumption of alcohol in the paddock, pits or any other Reserved Area is prohibited until all Competition is concluded each day. The holder of a Motorsport Australia Licence (or a Licence issued by another ASN) may be tested for the presence of alcohol by a Motorsport Australia Accredited Testing Official (CATO) in accordance with the Motorsport Australia Alcohol Policy at www.motorsport.org.au.

3.10 Judges of Fact

As in accordance with the Judges of Fact table provided in the National Rally Standing Regulations – Events General.

4 COMPETITION DETAILS

Table 1 - Event Details and Eligibility

Event Description	Midstate Freight Oberon Stages <u>State</u>	Midstate Freight Oberon Stages <u>Clubman</u>
Event Type	Special Stage Rally State Championship	Special Stage Rally Club Permit
Status	Rd 2 of the NSW Rally Championship Rd 3 of East Coast Classic Rally Series – 2WD and 4WD	Rd 2 of the Clubman Rally Series Rd 2 of the Hyundai Rally Series
Timing / Control Procedures	A-A	
Timing Resolution	To the Second	
Entries		
Maximum number of entries	90, plus 5 reserves	
Entry Fee	\$850.00	\$770.00
Licences		
Driver	A minimum of Motorsport Australia Rally Licence Civil Drivers Licence	
Co-Driver	A minimum of Motorsport Australia Rally or Rally - Navigator Licence Civil Drivers Licence or No Drive Declaration	
Eligibility & Classes		
Vehicle Eligibility	Table 3A, Table 3B or 3C below as appropriate	Table 3D or Table 3E below as appropriate
Be subject of a current and valid Motorsport Australia log book	Yes	
Roll Over Protection Structure (ROPS) required as per Schedule J	Yes	
Classes & Categories	As Per the 2022 Rally NSW Competition Conditions available at https://www.motorsport.org.au/docs/default-source/sporting-technical/nsw-act/2022/rally-nsw-comp-cond-part-1---competitors.pdf . There are no classes or categories for "Open".	
Apparel	As Per Schedule D of the Motorsport Australia Manual www.motorsport.org.au/docs/default-source/manual/general-requirements/2021/schedule-d---apparel.pdf NOTE: Frontal Head Restraints, 5- or 6-point harnesses and driving suits are mandatory for crews contesting the NSW Rally Championship.	As Per Schedule D of the Motorsport Australia Manual www.motorsport.org.au/docs/default-source/manual/general-requirements/2021/schedule-d---apparel.pdf NOTE: Frontal Head Restraints and 5- or 6-point harnesses are mandatory for crews contesting this Event. Driving suits are highly recommended.

Table 2 - Event Format

Event Format	Midstate Freight <u>State</u> Classic	Midstate Freight <u>Clubman</u> Classic
No. of Sections	1	
No. of Stages	10	
No. of Heats	2 (Not applicable for "Open")	Not applicable
Heat 1 starts	TC 0	
Heat 2 starts	TC 5C	
Total Distance (km)	373.8 km	
Comp. Distance (km)	146.22 km	
First Car Starts	09.00h	
First Car Finishes	16.29h	
Late time per section	30 min between any 2 Time Controls	
Total Late time	40 min	
Servicing		
Maximum distance between services	73.11km Competitive 187.19km Total	
Maximum Distance between refuels	48.2km Competitive 129 km Total	
Penalties		
Early arrival at control	1 minute for every minute or part thereof	
Late arrival at control	1 min/min taken from late time only	

Table 3A - Vehicle Eligibility NSWRC

Group	Definition
G2	Group G2 Rally Cars
G4	Group G4 Rally Cars
AP4	Group AP4 Rally Cars
PRC	Group 3C - Production Rally Cars
Gp N	FIA Group N
Gp N(P)	Motorsport Australia Group N(P) - with 33mm restrictor
Gp R	FIA Group R (excluding R5)
S1600	FIA Super 1600
S2000	FIA Super 2000 – Rallies
HRC	Historic Rally Cars categories 1 & 2
CRC	Classic Rally Cars
CLB	Group 3C - Club Rally Cars
ORCC	Road-registered 4WD automobiles that comply with: (i) the Motorsport Australia Off Road Production 4WD category regulations, or (ii) the regulations relating to Groups Ao, A1 or A2 of the Cross Country Rally Technical Regulations

Table 3B - Vehicle Eligibility ECCRS (2WD & 4WD)

Group	Definition
CRC	Classic Rally Cars - 2WD (C1, C2 and C3) 4WD(C3 and C4)
CLB+30	Group 3 - Club Rally Cars first manufactured at least 30 years prior to 31 December of the current year.

Table 3C - Vehicle Eligibility - Open

Group	Definition
Open	Any vehicle type that complies with "Vehicle Eligibility" in the National Rally Standing Regulations - Vehicles General of the Rally/Road Appendix of the 2022 Motorsport Australia Manual. Competitors in this Group will not be eligible for any NSW Rally Series points.

Table 3D - Vehicle Eligibility CRS

Group	Definition
G2	Group G2 Rally Cars
PRC	Group 3C - Production Rally Cars
Gp N	FIA Group N
Gp N(P)	Motorsport Australia Group N (P) - with 36mm restrictor
Gp N(P)	Motorsport Australia Group N (P) - with E85 fuel - 34mm restrictor
S2000	FIA Super 2000 – Rallies
HRC	Historic Rally Cars categories 1 & 2
CRC	Classic Rally Cars
CLB	Group 3C - Club Rally Cars
ORCC	Road-registered 4WD automobiles that comply with: (i) the Motorsport Australia Off Road Production 4WD category regulations, or (ii) the regulations relating to Groups A0, A1 or A2 of the Cross Country Rally Technical Regulations

Table 3E - Vehicle Eligibility HRS

Group	Definition
PRC	Production Rally Cars that comply with (i) Appendix A Excel Rally Cars, or (ii) Any Hyundai Production Rally Car

4.1 Entries

Entries open and close as per the Event Programme.

Entries may be refused in accordance with the NCR's.

All entries to the Events are to be submitted using the online Entry Form provided at <http://nsscc.com.au/portal/index.php/Events>. Scanned entries will only be accepted under special circumstances and if requested in advance to the Rally Secretary.

For the Midstate Freight **State** Classic event, CRC and CLB+30 vehicles are eligible to score points in both NSWRC and ECCRS. All **eligible** competitors in the Midstate Freight **State** Classic event will also receive Clubman and Hyundai Series points.

Entry forms require entrants to nominate the group of the competing vehicle to declare its eligibility to compete, receive awards and be allocated Series points. (eg, PRC, GpN, CLB+30, etc). For CRC and CLB+30 groups, the entry form will require entrants to nominate the year the vehicle model was first manufactured.

A Competitor may claim a refund of entry fee if an entry is withdrawn in writing not later than 1200hrs on Thursday, 21 April 2022.

4.2 Approval to Share Contact Details with the NSW Rally Advisory Panel

Competitors are encouraged to "opt in" to have their email and phone contact details shared by the Organisers with the Motorsport Australia NSW Rally Advisory Panel. This will allow the NSW Rally Panel to communicate directly with competitors to disseminate important Series information and carry out surveys to determine the future direction of the sport from a key stakeholder community. The ability to "opt in" will be found on the entry form.

4.3 Entry Fees

The entry fee is as per Table 1 for all entrants. Entry fees include the registration of service crews, Public Liability Insurance, Council Fees, Motorsport Australia Permit Fee, NSW Rally Panel Levy, Forestry Levy and Paramedic Services.

The preferred method of entry and payment is via the ONLINE ENTRY and PAYMENT FORM at <http://nsscc.com.au/portal/index.php/Events>

Payment via Direct Deposit, Cheque or credit card (by manual transaction) MUST BE REQUESTED IN ADVANCE AND PRE-APPROVED BY THE RALLY SECRETARY, for special circumstances only.

Only competitors whose entry fee has been paid in full by the close of documentation will be permitted to start the event.

4.4 Number of Entries

Entries will be limited to ninety (90) plus five (5) reserves. Should this number be exceeded then priority, in order of receipt, will be given to:

- Both crew members contesting a previous round of a Series in the current year
- One crew member contesting a previous round of a Series in the current year
- Both crew members are members of NSSCC.
- One crew member is a member of NSSCC
- Neither crew member contesting a previous round of the Series in the current year

4.5 Change of Entry

Competitors may, at any time up to the close of Documentation Verification, change the vehicle or crew members upon written notification to the Clerk of the Course. A change of driver or vehicle may necessitate the competitor to be reseeded.

4.6 Crew Eligibility

Crews will comprise two persons only. The same crew will be required to compete throughout the Rally.

4.7 Starting Order

The starting order will be determined by seeding using the NSW Rally Seeding List and/or whatever other information the Organisers select. The seeded list of entries will be available as per the Event Programme. The entire field will be seeded as one group.

A ballot for the first three NSWRC eligible drivers to determine starting positions will be held prior to the start.

4.8 Competitor Briefing

A Competitor Briefing will be conducted outside Documentation Verification as per the Event Programme. All participants are reminded to maintain appropriate social distancing.

5 SCRUTINEERING & DOCUMENTATION

5.1 Scrutineering

Relevant COVID-19 practices, including the use of disposable gloves and social distancing, are to be observed by all parties at scrutineering where appropriate. Competitors are requested to have their vehicles scrutineered by a Motorsport Australia Regional Rally Scrutineer in the timeframe as indicated in Section 1, Event Programme, and to present the fully completed and competitor signed "Self-Scrutiny Checklist" and "Self-Scrutiny Statement of Vehicle Compliance" forms at Documentation. These two documents can be found at <https://motorsport.org.au/covid-19/competitors>. The use of these forms negates the need for the Scrutineer to touch or enter the vehicle and only external visual checks are required. It is the responsibility of the competitor/entrant to ensure compliance to safety and eligibility. Safety apparel compliance and dates will be also observed under social distancing requirements. The only document required to change hands is the Vehicle Log Book, which will be completed by the Scrutineer and returned to the competitor/entrant using relevant COVID-19 safe practices (eg use of disposable rubber gloves).

The list of Regional Rally Scrutineers and a downloadable copy of the scrutineering form is available at www.rallynsw.com.au/info/organisers/scrutineering/.

The organisers have provided a limited timeframe to scrutineer some vehicles at the event. Any competitor who is unable to be regionally scrutineered is asked to contact the Clerk of the Course as early as possible to secure a time at the event.

At Scrutineering competitors will be required to present:

- "Self-Scrutiny Checklist" and "Self-Scrutiny Statement of Vehicle Compliance" forms
- Vehicle Logbook
- Helmets for both crew members
- All safety apparel including frontal head restraints for both crew members
- The car in a "ready to rally" condition, including driving lights (if they will be used)

5.2 Documentation

Subject to NSW Government legislated COVID-19 constraints on the day, there may be strict limits to the number of people who can be present in the room where Document Verification will occur and social distancing practices will be observed. **For this reason, it is highly recommended you allow additional time for this process to be completed for your entry.**

At Documentation Verification, all competitors will be required to present:

- Completed Self-Scrutineering forms (with the vehicle Logbook number noted)
- Licences for Driver / Co-Driver (Civil and Motorsport Australia)
- Motorsport Australia affiliated Car Club Membership – Driver / Co-Driver
- A signed hard copy of the Motorsport Australia Disclaimer from all Participants and Entrants
- Vehicle Registration Papers and proof of Third Party Insurance
 - NSW UVP's will be considered as valid registration however Competitors are encouraged to have their vehicle under NSW (or similar) Rally Registration
 - QLD registered vehicles will require a 3rd Party Extension

Road Book, Service Instructions, Competition Numbers, Advertising, etc will be issued at documentation verification.

5.3 Timetable for Scrutineering and Documentation

Please refer to Article 1 - Event Programme.

BLANK

6 VEHICLES

6.1 Vehicle Eligibility

As per Tables 3A, 3B, 3C, 3D & 3E as appropriate.

6.2 Classes - NSWRC

Categories and classes are as per the 2022 Rally NSW Competition Conditions for the NSW Rally Championship.

Categories

Outright – Open to all eligible vehicles

2WD - Open to eligible 2WD vehicles

Classes within the 2WD category are as follows:

0 – 1600cc (Pocket Rockets)

1601cc – 2000cc

2001cc and over

6.3 Classes - ECCRS-2WD

Categories are as per the 2022 Rally NSW Competition Conditions for the East Coast Classic Rally Series-2WD.

Categories

2WD (C1, C2, C3 2WD Classic Rally Cars and CLB+30 Club Rally Cars)

6.4 Classes - ECCRS-4WD

Categories are as per the 2022 Rally NSW Competition Conditions for the East Coast Classic Rally Series-4WD.

Categories

4WD (C3 and C4 4WD Classic Rally Cars)

6.5 Classes - Open

There are no categories or classes in this section.

Should there be less than 3 entries in a class or category the organisers reserve the right to combine or not award for those classes or categories.

7 EVENT DETAILS

7.1 Rally Headquarters

The Rally Headquarters and Service Park will be located at the Oberon Rugby Leagues Football Club, Lowes Mount Road, Oberon.

Subject to NSW Government legislated COVID-19 constraints on the day, there may be strict limits to the number of people who can be present in the various rooms located at Rally HQ, so please only be present if absolutely necessary.

7.2 Official Notice Board

The Official Notice Board will be located at Documentation Verification.

7.3 Directions to Rally Headquarters and Service Park

To get to the venue from the Great Western Highway, turn onto Jenolan Caves Road near Hartley (approximately 11km west of Mt Victoria). Follow this for approximately 24km then turn right onto Duckmaloi Road and travel a further 29km towards Oberon. At Oberon, turn right into Albion Street and after a further 3km turn right at the roundabout into Lowes Mount Road, then after 100m turn right into Rally Headquarters.

To get to the venue from Bathurst, follow O'Connell Road from Kelso to Oberon, turn left at the roundabout into Albion Street then left at the roundabout into Lowes Mount Road, then after 100m turn right into Rally Headquarters. A location map is provided at Appendix B.

7.4 Service Park In Controls and Final Time Control

Competitors may book into the following controls early (and only these controls) without penalty.

The service park In control (TC5A);
and the final control of the event, TC8A.

7.5 Servicing and Refuelling

Working on competing vehicles by anyone other than the competing crew is prohibited except at the Service Park or at or the designated emergency refuel service in Black Springs.

No service vehicle may drive on a competitive stage during the running of the Event without the express permission of the Clerk of the Course. If vehicle recovery is required, service crews are asked to contact Rally Headquarters for instruction.

Pump fuel is available at:

- BP – 24 Albion St, Oberon (E10, 91, 98 and diesel)
- Shell - corner North & Oberon Streets, Oberon (E10, 91, 98, diesel and autogas); and
- Westside Petroleum – 1 Horace Street, Oberon (E10, 91, 98 and diesel).

The maximum distance between service points will be 76.0 km total with 184.5 km competitive.

Service instructions will be issued at Documentation Verification.

In order to be covered by the Motorsport Australia Personal Accident Insurance, service crew members must be registered with the Organisers by the close of Documentation Verification. A form will be available at Documentation Verification.

8 GENERAL INFORMATION

8.1 Maps

All maps will be supplied by the Organisers.

8.2 Odometer Check

The survey car recorded 5.00 km between the "Odometer Start" and "Odometer Finish" signs heading north on Lowes Mount Road. The "Odometer Start" is 1.15km north of the Service Park entry. Directions to the Odometer Check will be included in the Road Book.

8.3 Route Instructions

The event is fully route charted.

Tulip diagrams will be provided, but the written instructions are to take precedence should any conflict in interpretation be encountered.

No closed gates will be encountered in special stages of the event.

8.4 Pacenotes

The use of pacenotes is only allowed for crews who nominate for the optional "Open" section and they will not be eligible for any NSW Rally Series points.

For competitors contesting the road book event and choosing to score championship and series points, pacenotes are banned and any crew found with pacenotes will be reported to the Stewards by way of a formal charge, who may impose a penalty up to and including exclusion from the Event.

Pacenotes shall be considered as notes in any form, other than the official documents and maps issued or authorised by the Organisers. Observers may be placed along the route to monitor compliance.

8.5 Reconnaissance

Competitors who have entered a competition which is "roadbook only" and found to be undertaking reconnaissance at any time will be referred to the Motorsport Australia Stewards by way of a formal charge.

The course will be "open" for reconnaissance ONLY for those competing on pacenotes and ONLY for Competitors who have lodged a completed, and paid, entry with the Organisers.

Competitors will be provided with an electronic version of the roadbook after their entry has been received and may register with the Event Secretary to undertake reconnaissance during the period specified in the Event Programme.

Competitors found to be undertaking reconnaissance at 'unregistered' times will be referred to the Motorsport Australia Stewards by way of a formal charge.

Competitors are reminded that Event Officials may be undertaking stage setup activities on the times set for reconnaissance and may be encountered at any point – and may be travelling in the opposing direction.

The Oberon Stages Rally consists of 5 separate stages, which are all repeated. Total unique special stage distance including transport beginning from the Service Park and ending at the Service Park is 186.9km.

Competitors undertaking reconnaissance are reminded that:-

1) ALL road rules and limits are in force and are to be observed – breaches will be referred to the Motorsport Australia Stewards by way of a formal charge.

2) The maximum speed limit applicable on Special Stages and all other unsealed roads during reconnaissance shall be 60km/h and all crews are required to strictly adhere to this limit. Under NO circumstances are crews to travel in the opposite direction to the set course unless specifically instructed to do so by the Organisers.

3) The speed of the vehicles being used for reconnaissance may be monitored by Officials and any observed or reported speeding will be referred to the Stewards. Residents in the areas are aware of the Event and have been instructed to report any issues to the Clerk of the Course for investigation.

We rely on the goodwill of these people to gain access to the roads in this area and they MUST be treated with respect.

4) During reconnaissance, roads WILL NOT be closed and crews are reminded that they DO NOT have priority over other road users. Members of the public may also be using these roads and may be travelling in opposing directions.

5) Crews are also reminded that the NSW Road Traffic Act will remain in effect for the duration of reconnaissance and that all road rules must be observed (e.g. complying with advisory signs, obeying speed limits imposed and keeping to the left). Officials may be on the course at any time to police these Regulations.

8.6 Event Signage

It is a condition of entry that all competing vehicles display the event and series signage outlined in Appendix B for the duration of the event.

8.7 Sunrise, Sunset at (Venue)

On Saturday, 23 April 2022:

Sunrise 06.29hrs EST

Sunset 17.29hrs EST

8.8 Penalties

The Clerk of the Course reserves the right to take into account all official documents when compiling the results, including control cards and to correct any verified recording errors.

8.9 Heats

For Competitors contesting the NSWRC, ECCRS-2WD or ECCRS-4WD, the event will be conducted in two heats for the purposes of allocating series points. Competitors will be allocated series points for each heat they complete. Heat 1 will finish at TC 4A and Heat 2 will start at TC 5C.

Any Competitor who does not complete a heat will have their stage results recorded in the results but will not be classified as a finisher for that heat nor be eligible for any event awards.

8.10 Finishing Qualifications

The finish of the event will be the last Special Stage finish control. Competitors will be responsible for handing their Time Cards in for scoring at Rally Headquarters as soon as possible upon their completion of the event.

All Competitors must complete 100% of the route under the power of the competing vehicle to be classified as finishers and feature in outright results.

Any crew that fails to report to any control or enters or leaves a control in other than the prescribed direction shall be deemed to have retired from the Event; the route being that as set out in the Road Book for each crew.

8.11 Results

The official and final results will be available on www.chrissport.co.nz, at 1800hrs Tuesday 26 April 2022, should no protests on the results be received.

Protests must be lodged in accordance with the NCR's.

BLANK

8.12 Rallysafe

This Event will be using the following Rallysafe set of features:

RallySafe Tracking and Safety System - Standard Features

Safety and Tracking - Competition	Standard	
	Active	Inactive
Safety and Tracking - Course/Official Vehicles	✓	

RallySafe Tracking and Safety System - Optional Features

	Active	Inactive
Primary Stage Timing (GPS) (Start times to be issued via RallySafe tablets)	✓	
Back-up Stage Timing (Beams) (Start times to be issued via RallySafe tablets)		✓
Time Control System (Only available if Primary Stage Timing is selected)	✓	
Push to Pass	✓	
Speed Monitoring		✓
Slow Car (RallySafe recommend 20kph for Gravel, 30kph for Tarmac)	✓	
Virtual Chicanes		✓
Restricted Time Zone		✓
Speed Restriction Zone		✓

All Competitors must make provision in their competition vehicle for a RallySafe unit used for tracking and safety messaging. **THE RALLYSAFE HEADEND UNIT MUST BE MOUNTED WHERE THE DISPLAY IS CLEARLY VISIBLE TO THE DRIVER AND CO-DRIVER THROUGHOUT THE EVENT.**

Messages and indications sent and received via the Rallysafe system such as SOS, Hazard, OK, Start Time and Push To Pass shall have the same meaning as a physical sign or other means of communication as specified within the NRSR and MUST be treated with identical status. In all cases, BOTH physical and Rallysafe forms of display/messaging should be used where possible.

Competitors must have a RallySafe wiring loom, antennas and mounting kit installed prior to Scrutiny. This is a one off purchase via the RallySafe web shop at shop.statusas.com/shop/category/rallysafe/.

A Fitting Kit Instruction Manual is available at rallysafe.com.au/competitors-tm/. The RallySafe system must be wired to permanent 12v power, not via any “kill” switch.

A RallySafe unit for each competing vehicle will be available at the Event, prior to the start as per the Event Schedule.

Competitors should familiarise themselves with the use of the RallySafe unit by reference to the “Competitor User Manual” available at rallysafe.com.au/competitors-tm/.

Fitment of the RallySafe unit to each competing vehicle must ensure its power supply and the proper connection of all aerials are continuous from 30 minutes prior to the vehicle leaving the first Time Control of a day until the car reaches the final Time Control of that day or retires from the Event. Interruptions to the power supply or aerial connections or any other misuse of the RallySafe equipment may be reported to the Stewards of the Event, who may impose a penalty up to exclusion.

Any misuse of the equipment will result in the Competitor being reported to the Stewards of the Meeting who may impose penalties up to exclusion.

It is solely the Competitor's responsibility to return the RallySafe unit to the Event Organisers immediately after the Event. Should a Competitor retire, they must return the RallySafe unit to Rally Headquarters as soon as possible.

The Competitor will be responsible for reimbursing RallySafe for the cost of any repairs to or replacement of a RallySafe unit. Information on insurance against RallySafe unit loss or damage can be found at: shop.statusas.com/shop/category/rallysafe/damage-waivers/

9 REMINDERS

9.1 Retirements

Any crew retiring from the event must submit their road cards to the Stage End Control or the Sweep Car.

Accurate details of the reason for withdrawal and any damage to vehicles or other property must be supplied. An Incident Report must be completed if a competitor or other person sustains any injuries and the organisers may require any crew to complete an Accident Report or other Motorsport Australia forms.

Failure to comply with these conditions may result in competitors being referred to the Stewards who may consider an act as a Breach of Rules in accordance with the NCR's and with further reference to these Regulations.

9.2 Re-joining

Re-joining in accordance with the NRSR will be permitted in this event at the discretion of the Clerk of the Course.

If the sweep vehicle catches up to a competitor who would normally be considered 'out of late time' the competitor may elect to either:

- withdraw, in which case they cannot participate further in the event, and must hand in their time card and withdrawal form; or
- request to re-join at a future point, in which case they must hand their current time card to the sweep vehicle and then proceed to the Service Park Time Control and make application to re-join.

Any competitor, who re-joins the rally in accordance with the above Regulations, will have stage results recorded in the results, but will not be classified as a finisher or be eligible for any event awards.

BLANK

10 WORKPLACE HEALTH & SAFETY ADVICE FOR ENTRANTS & SERVICE CREWS

All personnel are asked to assess the risks associated with any practice that they are involved with, and take action to minimise the potential injury to themselves and any other personnel.

Please observe the following rules to assist our event to be a safe one.

- No smoking within the service park
- Use a liquid proof ground sheet beneath the car during all servicing and re-fuelling operations
- Jack stands must be used when working under vehicle
- Suitable fire extinguisher required to be readily available when refuelling

Subject to NSW Government legislated COVID-19 constraints on the day, there may be a requirement for all competitors, service crews, officials and volunteers to carry out safe COVID-19 practices such as:

- Social distancing
- Frequent hand washing (or use of hand sanitiser if washing not possible)
- No sharing of equipment if possible
- Frequent cleaning of surfaces that are touched by others
- One person per 4m² indoors
- Use of Personal Protection Equipment (PPE) where appropriate

Further notification of requirements will be provided closer to the event.

Prior to the event, please consider how the above will impact all aspects of your team's involvement and come prepared to comply with the provisions on the day of the event. Non-compliance not only places the health and wellbeing of yourselves, other crews, officials and volunteers at risk but also puts in jeopardy the ability of following events to be authorised to run.

BLANK

11 AWARDS

Awards or trophies will be presented to both the driver and co-driver who are eligible for:

11.1 Outright Awards

Outright - 1st, 2nd, 3rd

11.2 NSW Rally Championship

Outright - 1st, 2nd, 3rd

Categories - 1st 2WD

Classes within 2WD Category

1st 0cc – 1600cc (Pocket Rocket)

1st 1601cc – 2000cc

1st 2001cc and over

11.3 East Coast Classic Rally Series-2WD

Outright - 1st, 2nd, 3rd

11.4 East Coast Classic Rally Series-4WD

Outright - 1st, 2nd, 3rd

11.5 Clubman Rally Series Awards

Outright 1st, 2nd, 3rd

Categories - 1st 2WD

1st 4WD

11.6 Hyundai Rally Series Awards

Outright 1st, 2nd, 3rd

Categories - 1st Excel

1st Open

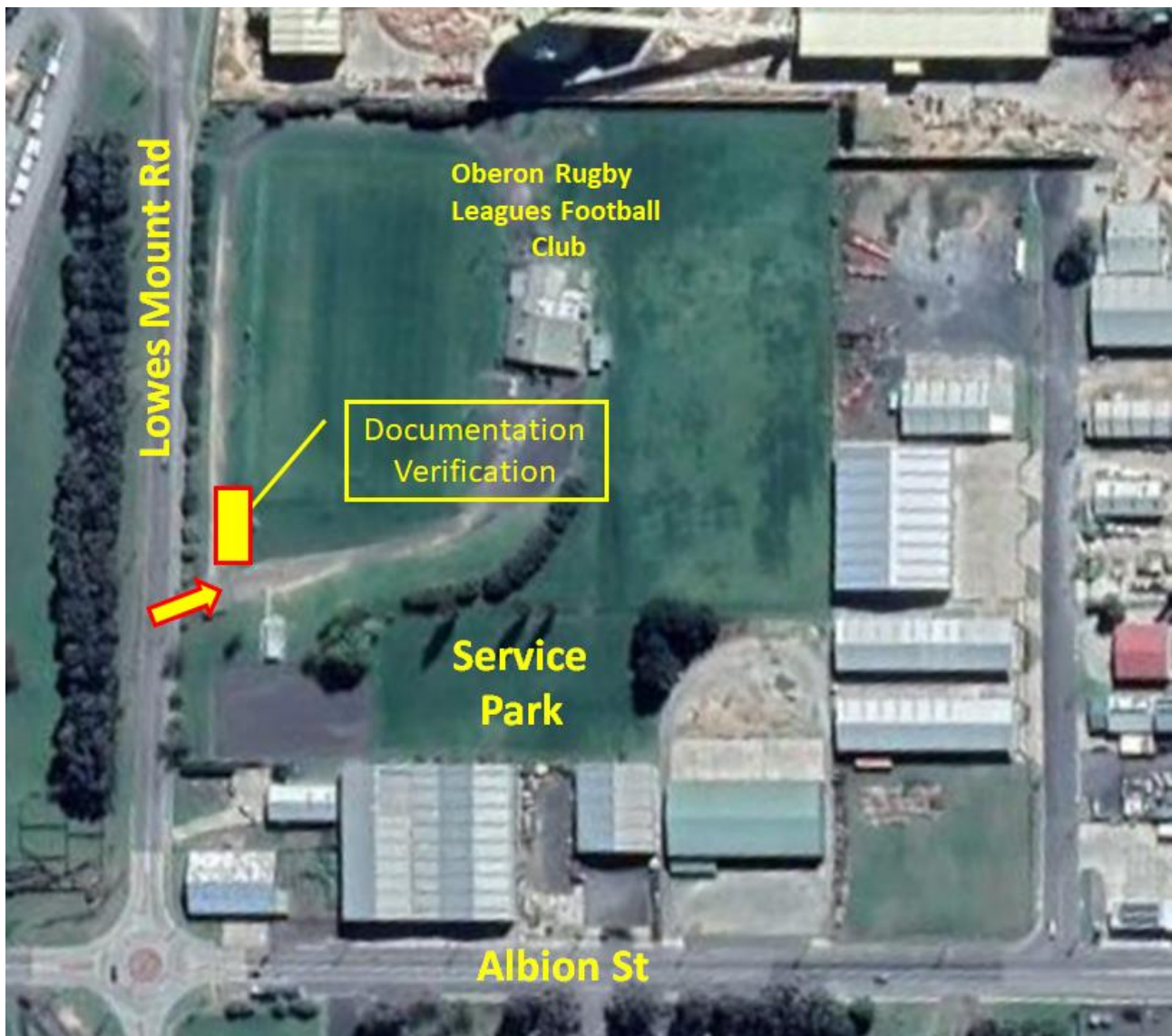
11.7 Open

Outright - 1st, 2nd, 3rd

Should there be less than 3 entries in a class or category the organisers reserve the right to combine or not award for those classes or categories.

The Organisers reserve the right to add to these awards.

APPENDIX A - RALLY HEADQUARTERS LOCATION MAP



Entrance

33°41'50.6"S 149°51'20.0"E

(-33.697374, 149.855545)

APPENDIX B - VEHICLE NUMBERING AND SIGNAGE REQUIREMENTS

The following vehicle signage is required for all vehicles contesting Rally NSW Series events.

Vehicle signage stickers:

Important – the vehicle numbers supplied are designed to not damage paintwork by the use of removable adhesive. When applying your vehicle numbers please **ensure that your car is clean and dry**. Press the stickers down **firmly** and rub to the edges and the corners. Avoid lifting and re-applying. The vehicle signage in use is a modified FIA style. Please refer to the sample vehicle diagram below:

- **2 x MTA Front Guard Stickers:** To be placed on each front guard area of the vehicle. Sticker size: 260mm(W) x 90mm(H)
- **2 x MTA Mirror Stickers (Subject to mirror shape):** To be placed on the front of each door mirror if the mirror shape allows.
- **2 x Hoosier Front Guard Stickers:** To be placed on each front guard or front area of the vehicle. Sticker size: 260mm(W) x 90mm(H)
- **2 x Door Plate Stickers:** To be placed at the top of both front doors. Door Plate Stickers are usually 450mm(W) x 150mm(H) and are provided by the event organisers.
- **2 x Large Orange Numbers:** To be placed on the side windows on both rear doors above the names (rear quarter windows on a coupe).
- **2 x Smaller Yellow Numbers:** To be placed on the top passenger side corner of the windscreen, and on the matching place on the rear windscreen.

